



OFFICE SPACE AVAILABLE

HISTORIC CONE EXPORT BUILDING

330 SOUTH GREEN STREET
GREENSBORO, NC 27401

Nestled in Energetic Downtown Greensboro, the historic Cone Export Building exhibits classic Southern charm. While preserving the spectacular features of the original construction, the interior has undergone tremendous renovation to offer modernized office spaces and amenities.

The premises is within walking distance of **many famous local eateries, city parks and great entertainment, and government plaza!**

This property includes, Reserved Parking in On-Site Parking Deck and Patio area.



CURRENTLY AVAILABLE:

FIRST FLOOR: 7,000 SQ. FT. SECOND FLOOR: 7,000 SQ. FT.

FEATURING RICH HISTORICAL ARCHITECTURE



SPACIOUS OFFICES WITH LARGE WINDOWS



LARGE CONFERENCE ROOMS



CASUAL COMMON SPACE



CONVENIENT BREAK AREAS



7,000 SQ. FT. 1ST FLOOR

- Magnificent Entryway
- Reception Area
- Multiple Office Spaces
- Two Conference/Meeting Rooms
- Work/File Space
- Kitchen
- Private Bathrooms
- Natural Light
- Shared Elevator



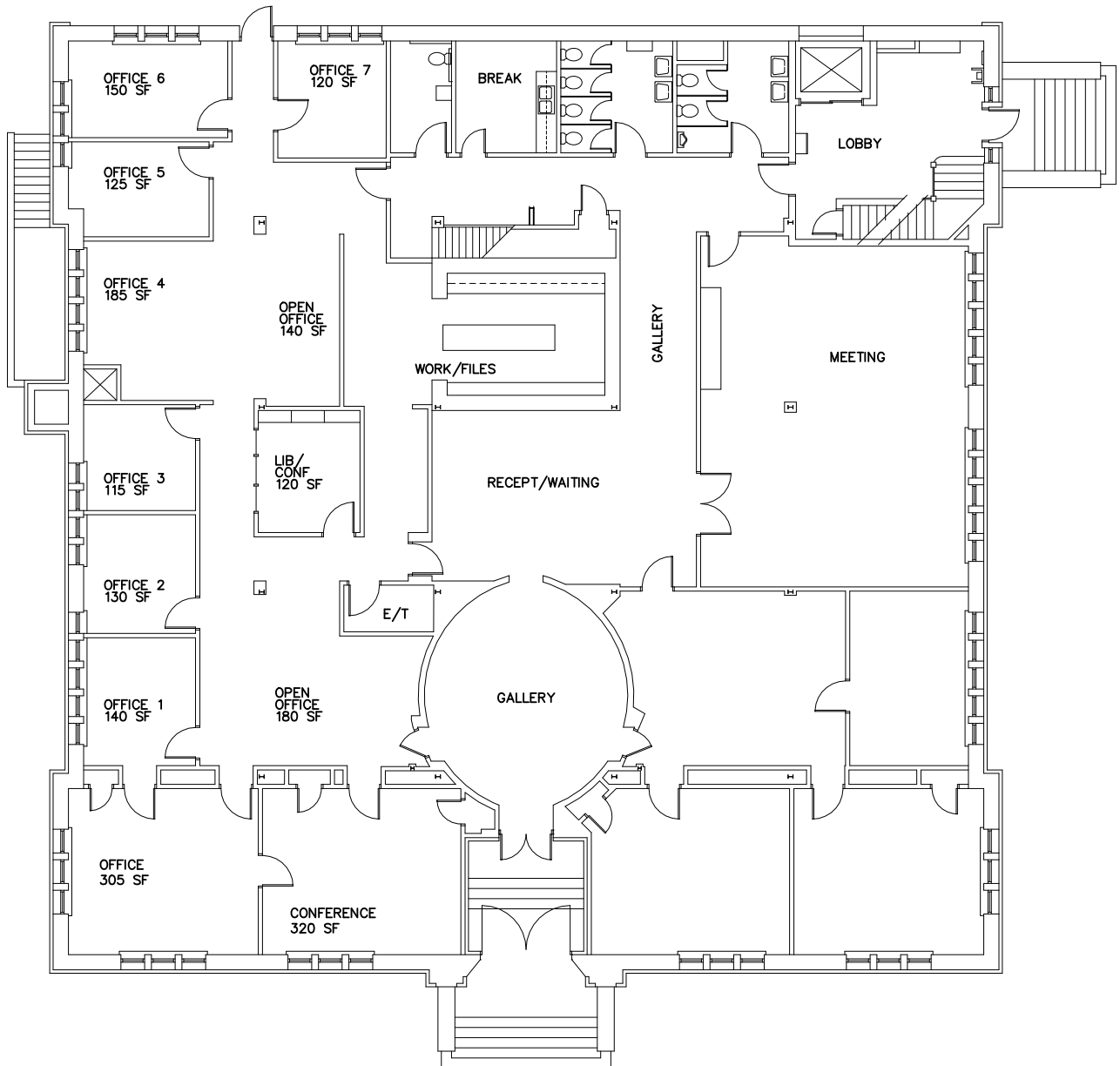
FREE SAFE COVERED PARKING

7,000 SQ. FT. 2ND FLOOR

- Multiple Office Spaces
- Open Office Space
- Conference/Meeting Room
- Work/File Space
- Kitchen
- Private Bathrooms
- Natural Light
- Shared Elevator

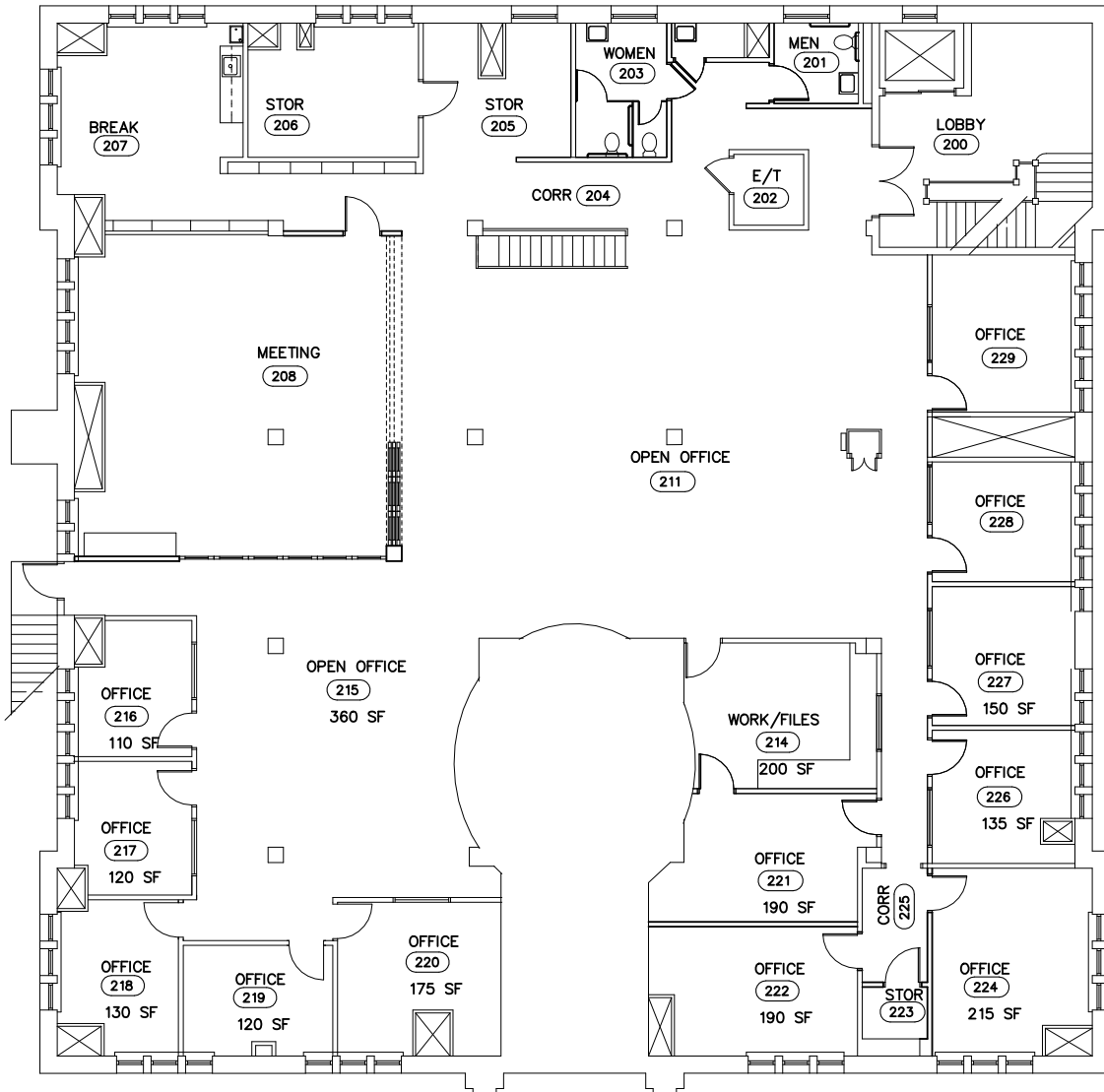
FIRST FLOOR

7,000 SQ. FT.



SECOND FLOOR

7,000 SQ. FT.





az development

CONTACT: Andy Zimmerman: 336.255.4813
andyz@azdev.biz