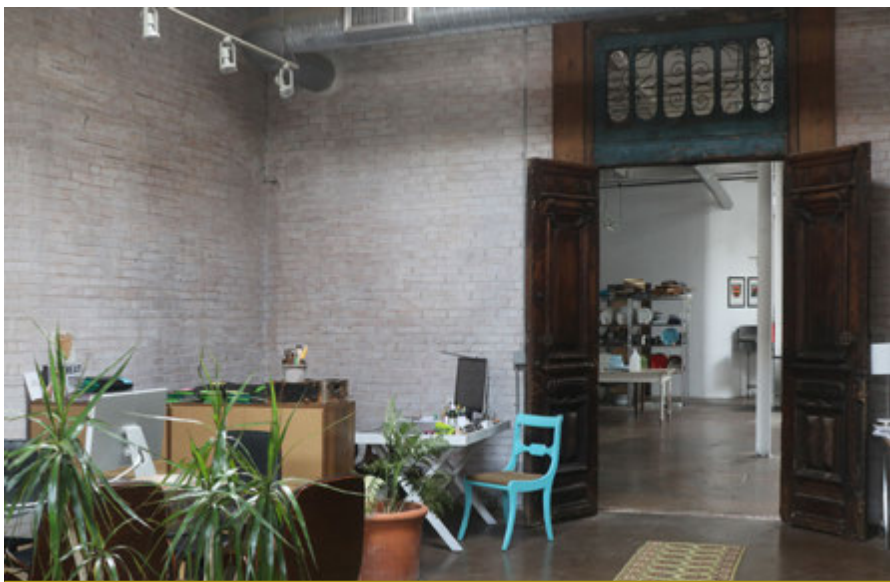




## UNIQUE ART INDUSTRIAL STYLE WORK SPACE AVAILABLE

HOME TO THE FORMER, EARLY 1900'S GLASCOCK STOVE AND MFG. CO.



### A BEAUTIFUL BLEND OF OLD AND NEW

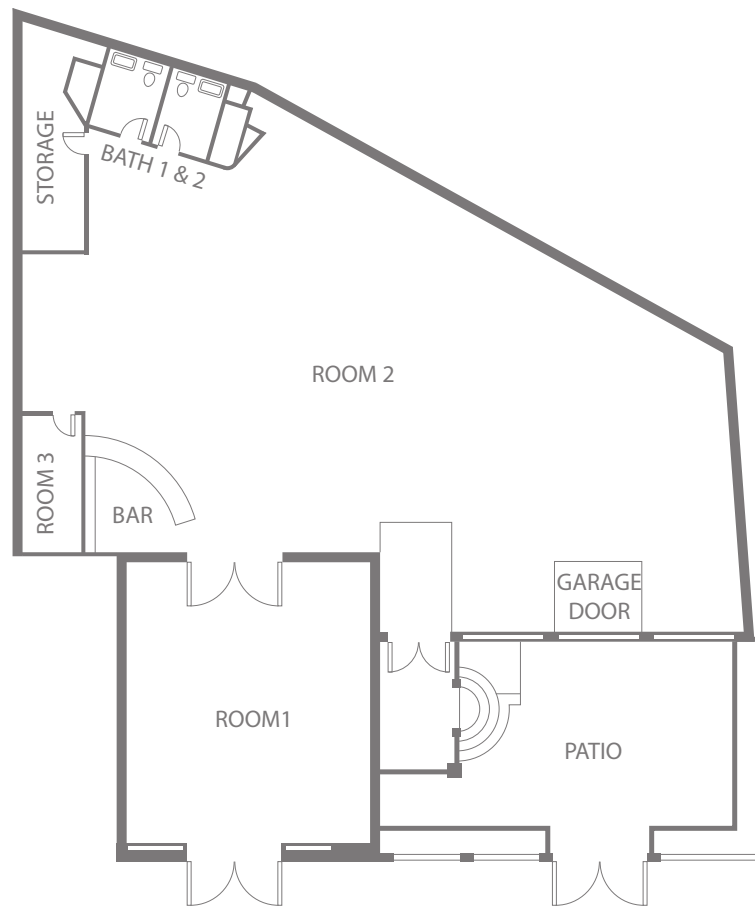
Located in dynamic South End Greensboro, this 4,648 square foot space offers a magnificent industrial type setting.

Currently used as a photography studio, this is an ideal place for any established or emerging organization to take a presence in the most popular area of the city!

**AVAILABLE:**  
ONE FLOOR: 4,648 SQ. FT.



**KITCHEN BAR AREA**



**4,648 SQ. FT. AVAILABLE**



**SITTING/MEETING AREA**

**AMENITIES INCLUDE:**

- High Ceilings
- Abundant Natural Light with Skylights
- Gorgeous Architectural Details

- Custom Bar Area
- Kitchenette
- Sealed Concrete floors
- Garage Door

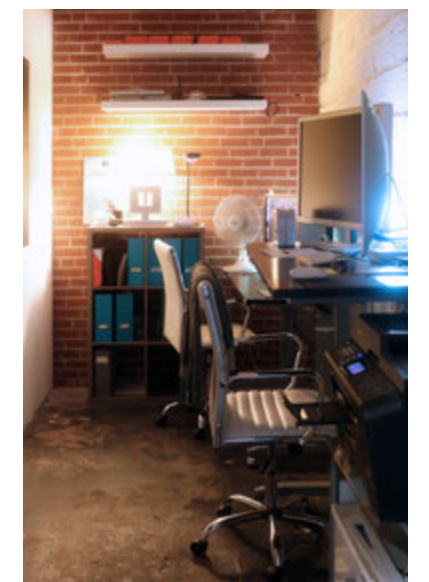
- 2 Bathrooms With Showers
- Outdoor Private Patio With Gardens
- Office & Storage Space



**OPEN SPACES WITH HIGH CEILINGS AND SKYLIGHTS**



**BLENDING OF INTERIOR AND EXTERIOR PRIVATE PATIO**



**COZY OFFICE AREA**



**CONTACT:** Andy Zimmerman: 336.255.4813

[andyz@azdev.biz](mailto:andyz@azdev.biz)